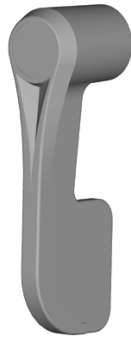


010-0100  
Release Lever



Designed as an inside release for use with TriMark's L-handles with a 5/16" square drive bar



**TriMark Corporation**

500 Bailey Avenue  
P.O. Box 350  
New Hampton, Iowa 50659  
United States  
Tel: 641-394-3188  
Fax: 641-394-2392  
1-800-447-0343  
www.trimarkcorp.com



**TriMark Europe**

Cedar Court  
Walker road  
Bardon Hill  
Coalville LE67 1TU  
United Kingdom  
Tel: +55 (0)1530 512460  
Fax: +44(0)1530 512461  
www.trimarkeu.com



**AVAILABLE:**

- With 5/16" square hole at 90 degree or 45 degree orientation

**MATERIAL:**

- Die cast zinc alloy

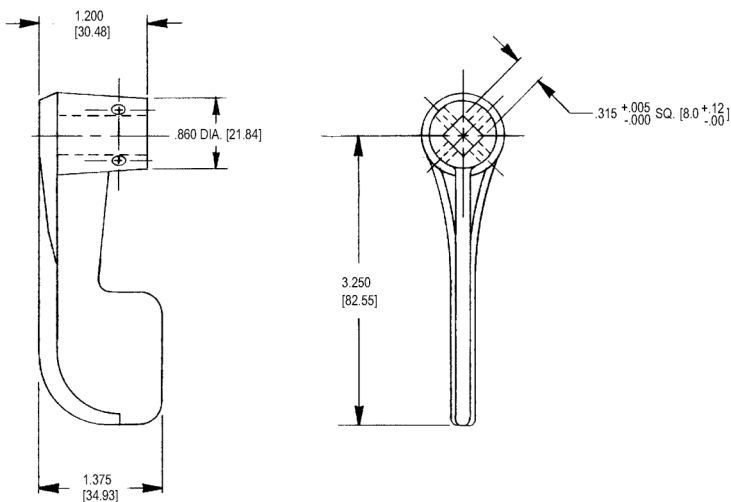
**FINISH:**

- Mill -- unplated
- Copper-nickel-chrome plated
- Black powder coated

**INSTALLATION:**

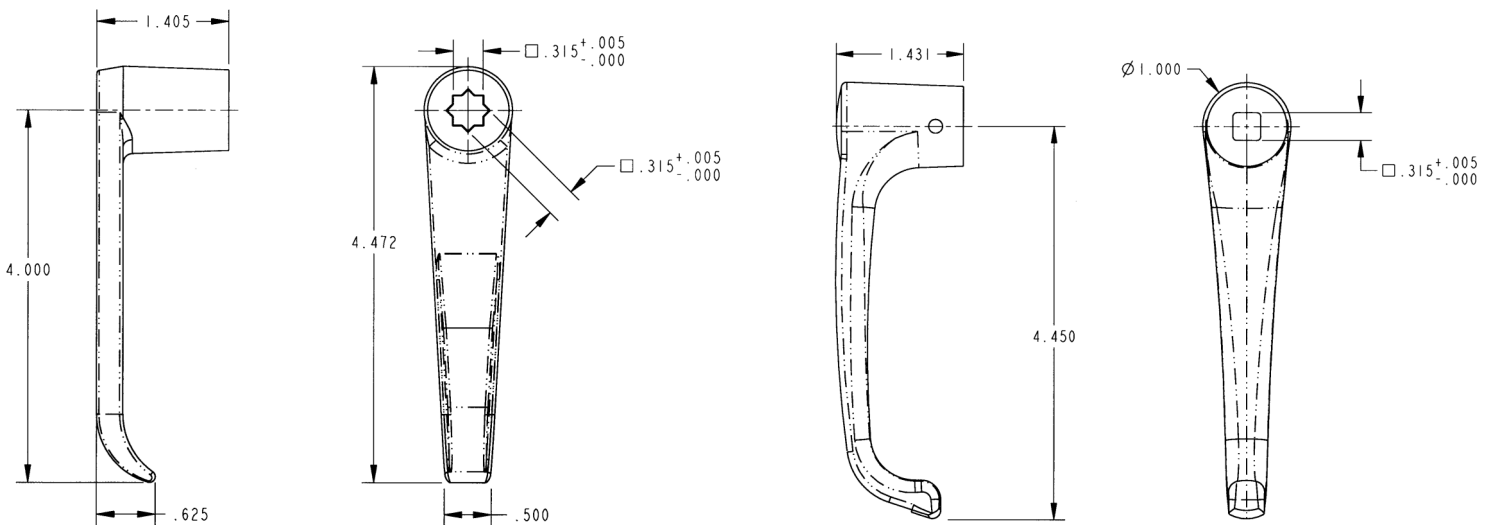
- .156" diameter roll pin (not included)
- 5/16" diameter set screw

Individual part dimensions are for reference only. Refer to individual part drawings for complete dimensions, specifications, and installation procedures. Engineering assistance and application drawings are available.



**Style 1**

For more information visit  
[www.trimarkcorp.com](http://www.trimarkcorp.com)



**Style 2**

**Style 3**